

**Sustainable plastics
management
saves environment for
generations**



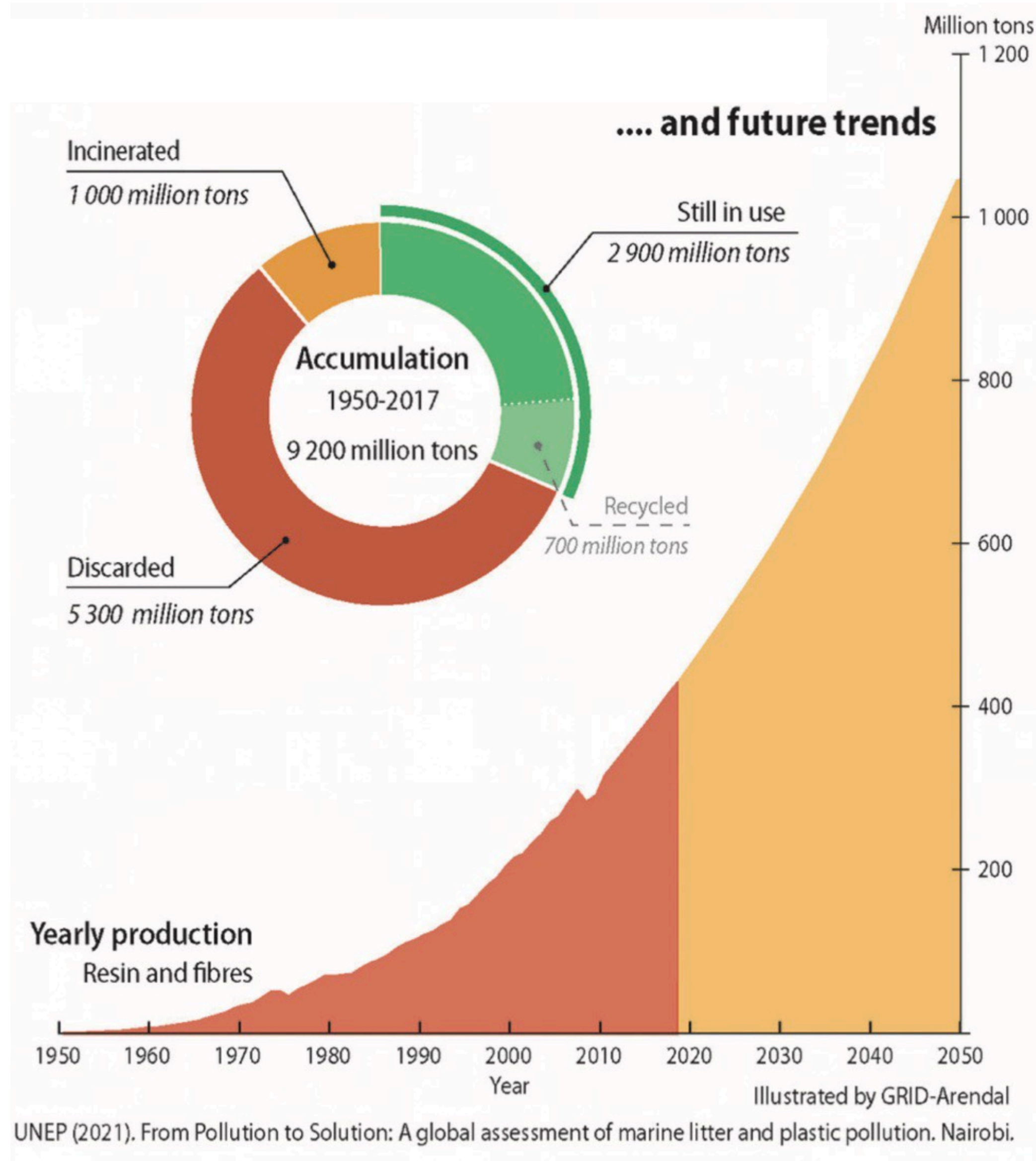
Way of Plastics - the challenge



The disposal of plastic waste is one of Ugandas biggest challenges. There are no formal waste collection services.

Over 600 tonnes of plastic is disposed of every day, with over 90% of it ending up in unsafe landfills or be burnt.

Global Plastic production and accumulation



Plastics you find in all fields of daily life

- Packaging
- Building construction
- Electronics
- Agriculture
- Vehicles
- Household
- Other

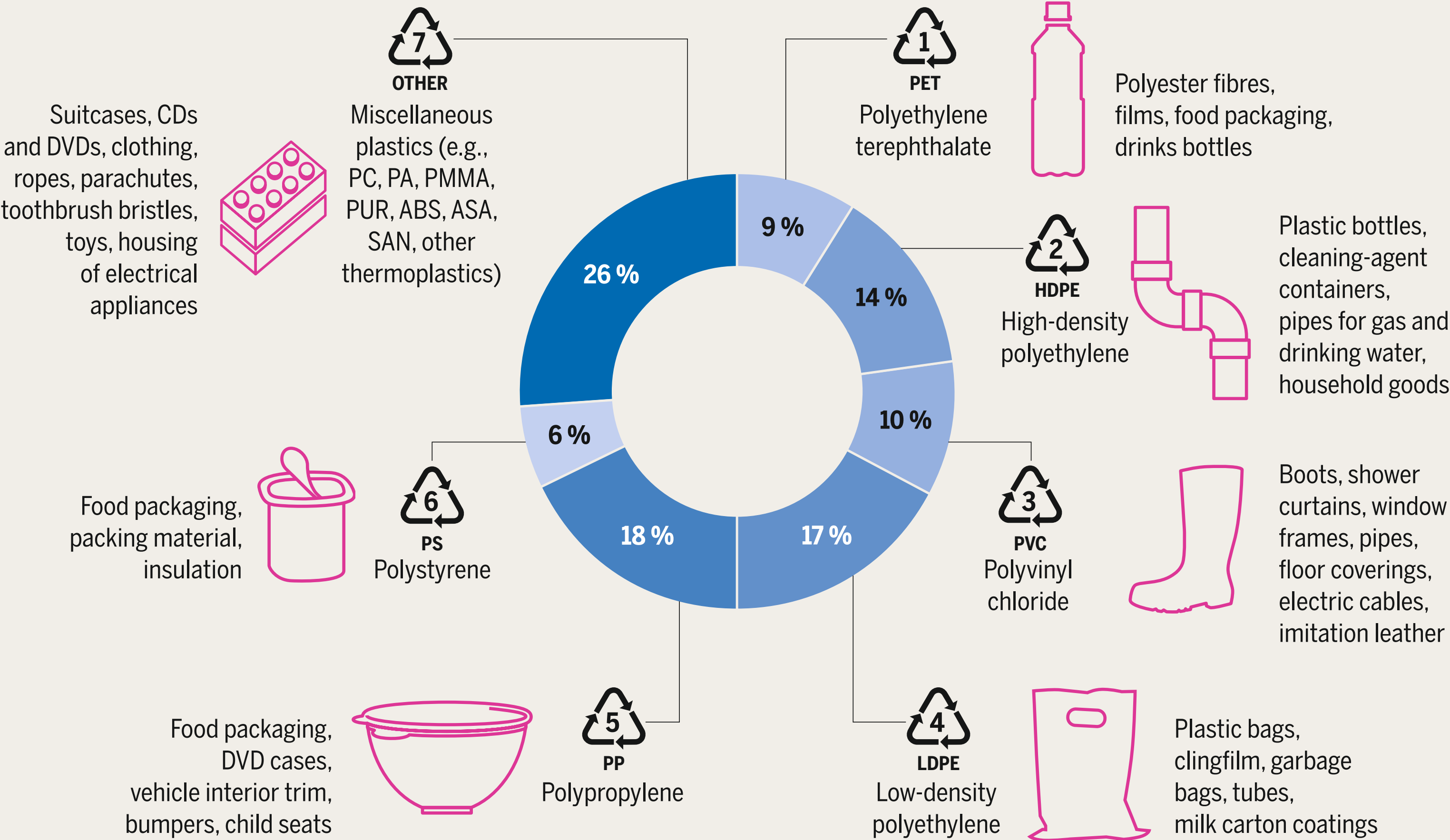


Sorts of Plastics



THE PLASTIC ROUNDABOUT

Seven recycling codes defined by the European Commission and percentage of total quantity produced worldwide, 2015



© PLASTIC ATLAS 2019 / YEO

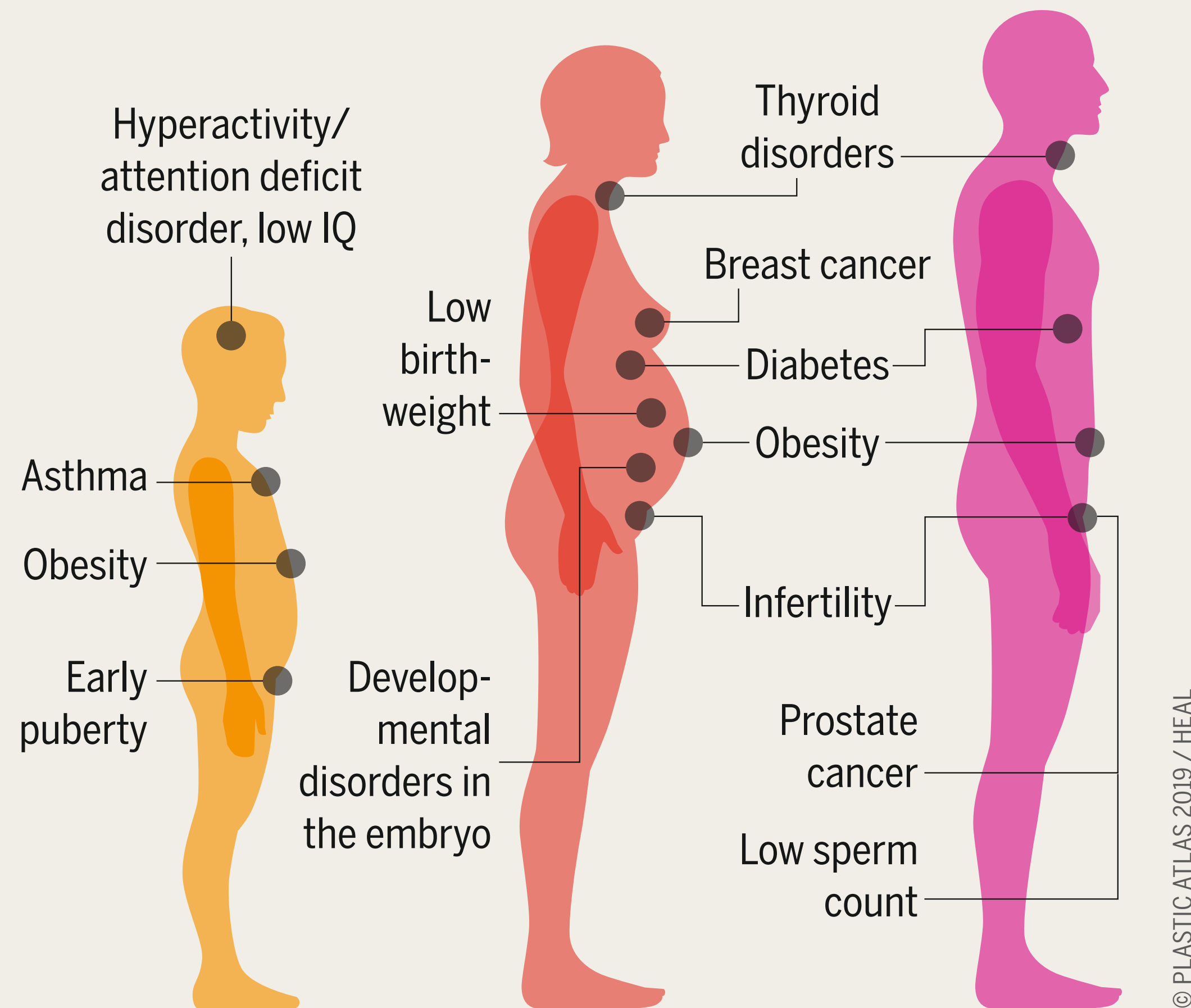
Difficult to recycle

- 3 PVC
- 6 PS
- 7 others

Effects on human health

INVISIBLE DANGER

Possible health consequences of day-to-day contact with hormonally active substances in plastics



How human health hazards arise from plastics

- Burning plastics - air pollution
- Plastics in the soil, micro plastic in plants
- Plastics in groundwater and drinking water
- Covering food with plastic bags during cooking

On average, five grams of tiny plastic particles enter a person's gastrointestinal tract **within a week**. This corresponds approximately to a **credit card**

Effects on animals



Plastics and cows



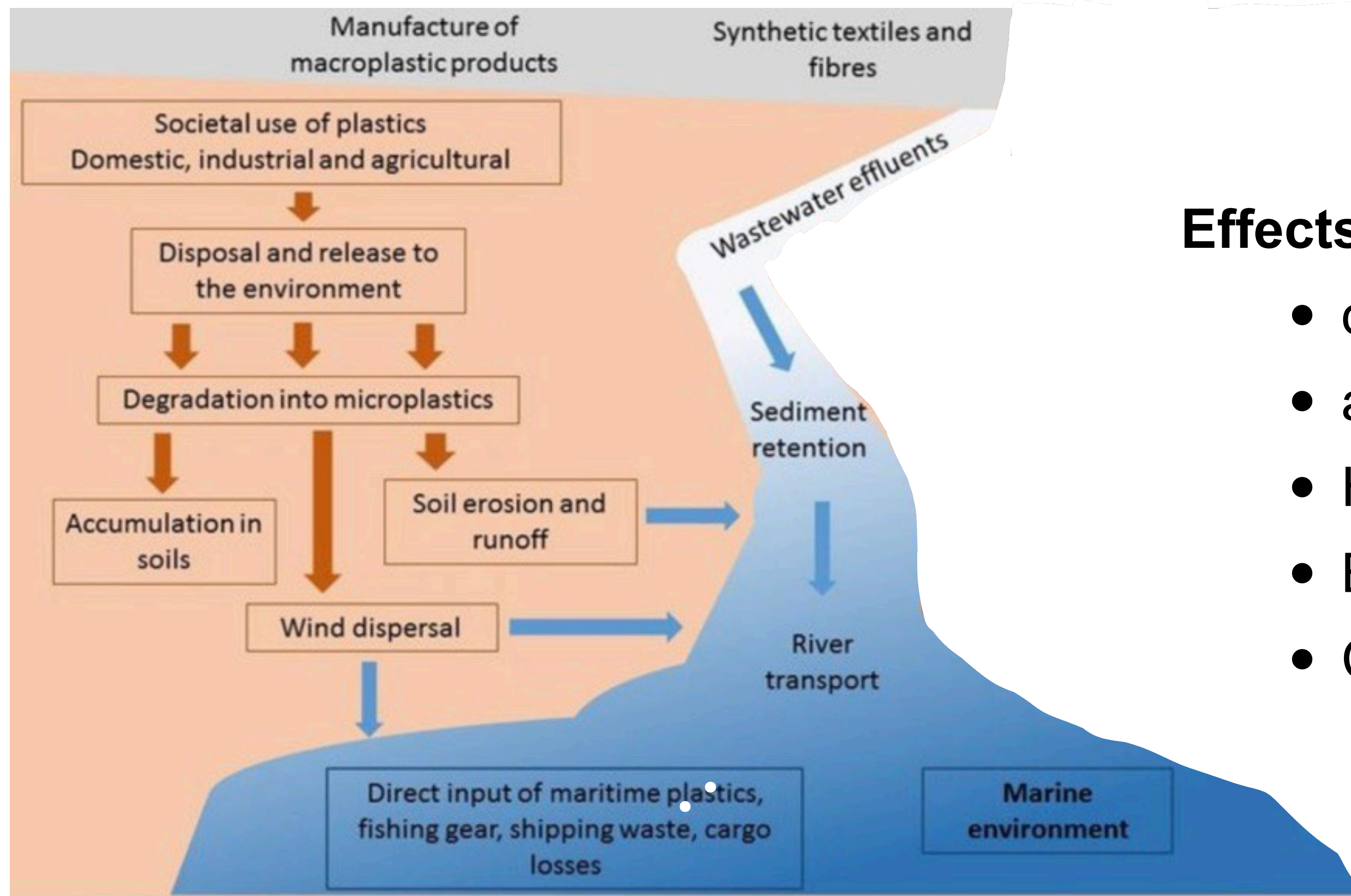
Plastics and wildlife

Effects on animals

Plastic pollution may damage habitats and reduce biodiversity through introduction of new pests and diseases.

What happens when wildlife encounter plastics? Wildlife can get caught in discarded plastics and often die if they cannot escape. Animals can mistake plastics for food, often resulting in injury or death.

Effects on the environment



Effects to nature - Plastics

- don't easily decompose
- aren't environment friendly
- Hinder water penetration
- Block drainage channels
- Contaminate water & lakes

Conceptual diagram of microplastic sources and flows throughout and between anthropogenic,

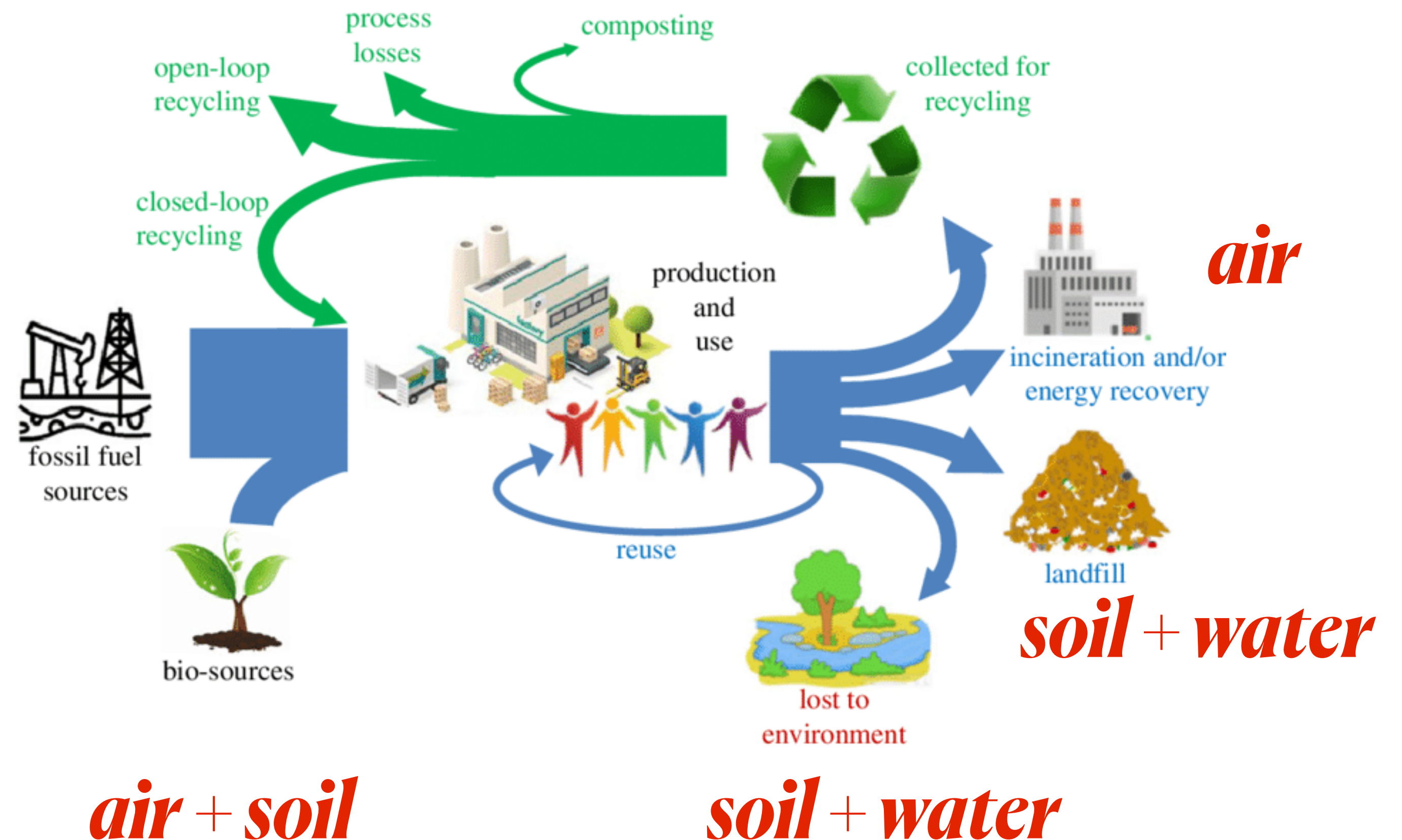
Effects on the environment



pollution

Effects to nature - Plastics

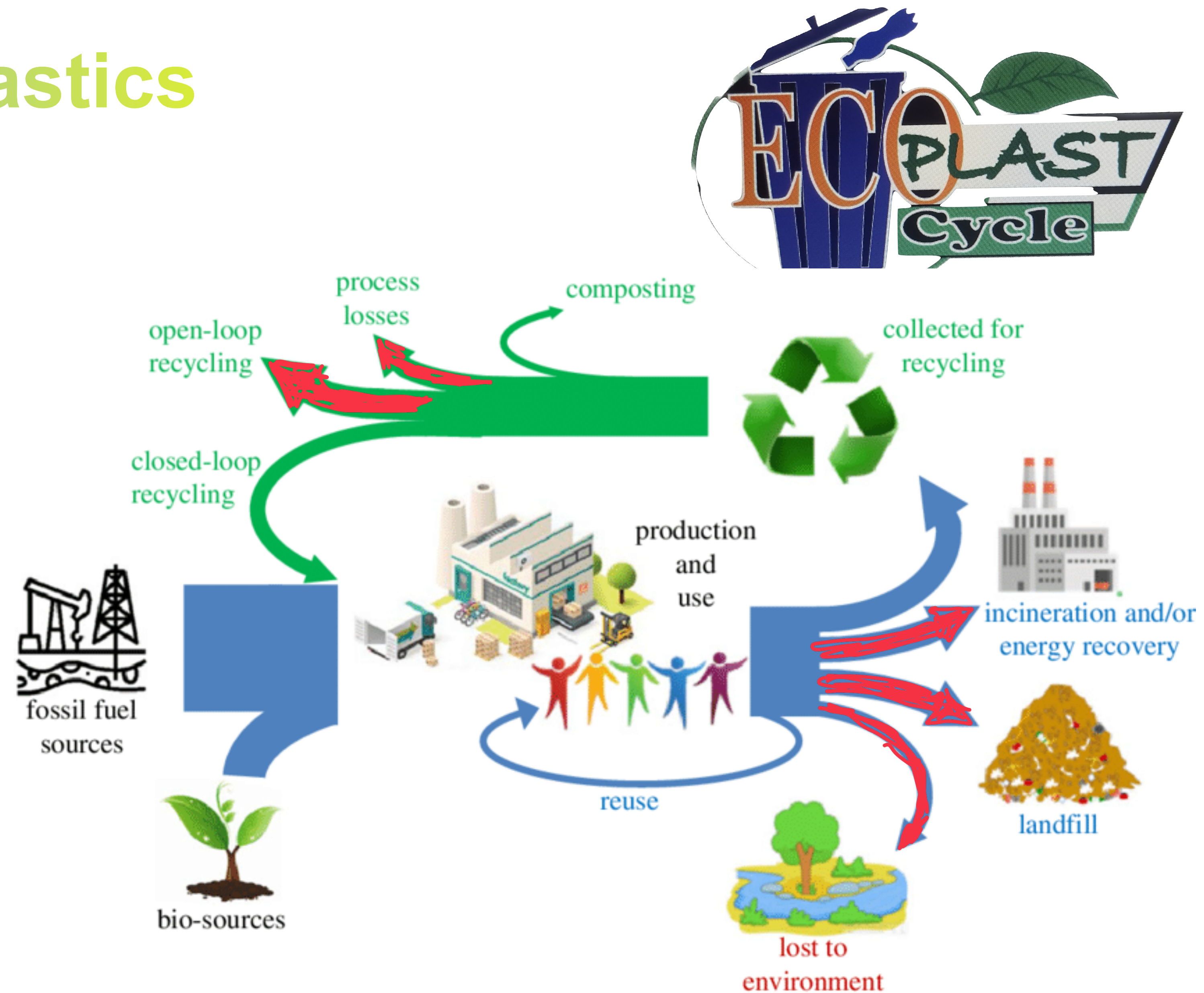
- don't easily decompose
- aren't environment friendly
- Hinder water penetration
- Block drainage channels
- Contaminate water & lakes



Handling of Plastics

Handling Plastics

- Refuse of Plastics
- Reuse
- Living friendly with plastics - use - reuse - recycling - use again
- Business in the whole cycle - reward, source of income for different groups of people
- Eliminate plastics in environment, landfill and incineration and optimize the recycling process
- Recycling process - gathering - shredding, manufacturing of new and innovative products



Our efforts to increase recycling



Efforts

- **Plastic bins** for the NDU compound to search and get an **plastics free compound**.
- Recycling the plastic waste - new products - **no landfill no burning**
- Biblical background - Jesus said “**love your neighbor**” - I love my neighbor when I **refuse** - **reuse** - **recycle** my plastic waste 🥰🙏
- **Sustainability** is coming from the **Bible** when I read and understand how our **creator** think about us and environment

**Sustainable
plastics
management
saves environment
for generations**

Plastic bin

ONLY PLASTICS





Sustainable plastics management saves environment for generations

developed by



NDEJJE
UNIVERSITY

Fear of God brings Knowledge and Wisdom

