

# Triad/Close Voicings/ Cycle 2: C major

## Root Position

C Dmi Emi F G Ami Bo C

1

## Second Inversion

C Dmi Emi F G Ami Bo C

2

## First Inversion

C Dmi Emi F G Ami Bo C

3

# Triad/Spread Voicings/ Cycle 2: C major

## Root Position

C Dmi Emi F G Ami Bo C

4

## Second Inversion

C Dmi Emi F G Ami Bo C

5

## First Inversion

C Dmi Emi F G Ami Bo C

6

# Triad/Close Voicings/ Cycle 2: C major--Also acceptable

## Root Position

C Dmi Emi F G Ami Bo C

1

## Second Inversion

C Dmi Emi F G Ami Bo C

2

## First Inversion

C Dmi Emi F G Ami Bo C

3

# Triad/Spread Voicings/ Cycle 2: C major--Also acceptable

## Root Position

C Dmi Emi F G Ami Bo C

4

## Second Inversion

C Dmi Emi F G Ami Bo C

5

## First Inversion

C Dmi Emi F G Ami Bo C

6

# Triad/Close Voicings/ Cycle 4: C major

## Root Position

C F Bo Emi Ami Dmi G C

1

A musical staff in treble clef showing the close voicings for the Root Position triads of the C major cycle. The notes are: C (C4, E4, G4), F (F4, A4, C5), Bo (B3, D4, F4), Emi (E3, G3, B3), Ami (A2, C3, E3), Dmi (D2, F2, A2), G (G2, B2, D3), and C (C3, E3, G3).

## Second Inversion

C F Bo Emi Ami Dmi G C

2

A musical staff in treble clef showing the close voicings for the Second Inversion triads of the C major cycle. The notes are: C (E3, G3, C4), F (A2, C3, F4), Bo (B2, D3, F4), Emi (E2, G2, B3), Ami (A2, C3, E3), Dmi (D2, F2, A2), G (G2, B2, D3), and C (E3, G3, C4).

## First Inversion

C F Bo Emi Ami Dmi G C

3

A musical staff in treble clef showing the close voicings for the First Inversion triads of the C major cycle. The notes are: C (C3, E3, G3), F (F3, A3, C4), Bo (B3, D4, F4), Emi (E3, G3, B3), Ami (A3, C4, E4), Dmi (D3, F3, A3), G (G3, B3, D4), and C (C3, E3, G3).

# Triad/Spread Voicings/ Cycle 4: C major

## Root Position

C F Bo Emi Ami Dmi G C

4

A musical staff in treble clef showing the spread voicings for the Root Position triads of the C major cycle. The notes are: C (C3, E3, G4), F (F3, A3, C5), Bo (B3, D4, F5), Emi (E3, G3, B4), Ami (A3, C4, E4), Dmi (D3, F3, A4), G (G3, B3, D5), and C (C3, E3, G4).

## Second Inversion

C F Bo Emi Ami Dmi G C

5

A musical staff in treble clef showing the spread voicings for the Second Inversion triads of the C major cycle. The notes are: C (E3, G3, C4), F (A2, C3, F4), Bo (B2, D3, F4), Emi (E2, G2, B3), Ami (A2, C3, E3), Dmi (D2, F2, A2), G (G2, B2, D3), and C (E3, G3, C4).

## First Inversion

C F Bo Emi Ami Dmi G C

6

A musical staff in treble clef showing the spread voicings for the First Inversion triads of the C major cycle. The notes are: C (C3, E3, G4), F (F3, A3, C5), Bo (B3, D4, F5), Emi (E3, G3, B4), Ami (A3, C4, E4), Dmi (D3, F3, A4), G (G3, B3, D5), and C (C3, E3, G4).

# Triad/Close Voicings/ Cycle 6: C major

## Root Position

C    Ami    F    Dmi    Bo    G    Emi    C

1

## First Inversion

C    Ami    F    Dmi    Bo    G    Emi    C

2

## Second Inversion

C    Ami    F    Dmi    Bo    G    Emi    C

3

# Triad/Spread Voicings/ Cycle 6: C major

## Root Position

C    Ami    F    Dmi    Bo    G    Emi    C

4

## First Inversion

C    Ami    F    Dmi    Bo    G    Emi    C

5

## Second Inversion

C    Ami    F    Dmi    Bo    G    Emi    C

6

# Triad/Close Voicings/ Cycle 7: C major

## Root Position

C B<sup>o</sup> A<sup>mi</sup> G F E<sup>mi</sup> D<sup>mi</sup> C

1

## First Inversion

C B<sup>o</sup> A<sup>mi</sup> G F E<sup>mi</sup> D<sup>mi</sup> C

2

## Second Inversion

C B<sup>o</sup> A<sup>mi</sup> G F E<sup>mi</sup> D<sup>mi</sup> C

3

# Triad/Spread Voicings/ Cycle 7: C major

## Root Position

C B<sup>o</sup> A<sup>mi</sup> G F E<sup>mi</sup> D<sup>mi</sup> C

4

## First Inversion

C B<sup>o</sup> A<sup>mi</sup> G F E<sup>mi</sup> D<sup>mi</sup> C

5

## Second Inversion

C B<sup>o</sup> A<sup>mi</sup> G F E<sup>mi</sup> D<sup>mi</sup> C

6

# Triad/Close Voicings/ Cycle 7: C major--Also acceptable

## Root Position

C B<sup>o</sup> A<sup>mi</sup> G F E<sup>mi</sup> D<sup>mi</sup> C

1

## First Inversion

C B<sup>o</sup> A<sup>mi</sup> G F E<sup>mi</sup> D<sup>mi</sup> C

2

## Second Inversion

C B<sup>o</sup> A<sup>mi</sup> G F E<sup>mi</sup> D<sup>mi</sup> C

3

# Triad/Spread Voicings/ Cycle 7: C major--Also acceptable

## Root Position

C B<sup>o</sup> A<sup>mi</sup> G F E<sup>mi</sup> D<sup>mi</sup> C

4

## First Inversion

C B<sup>o</sup> A<sup>mi</sup> G F E<sup>mi</sup> D<sup>mi</sup> C

5

## Second Inversion

C B<sup>o</sup> A<sup>mi</sup> G F E<sup>mi</sup> D<sup>mi</sup> C

6

# Triad/Close Voicings/ Cycle 5: C major

## Root Position

C G Dmi Ami Emi Bo F C

1

## First Inversion

C G Dmi Ami Emi Bo F C

2

## Second Inversion

C G Dmi Ami Emi Bo F C

3

# Triad/Spread Voicings/ Cycle 5: C major

## Root Position

C G Dmi Ami Emi Bo F C

4

## First Inversion

C G Dmi Ami Emi Bo F C

5

## Second Inversion

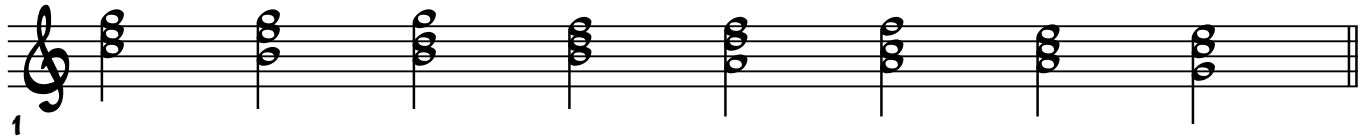
C G Dmi Ami Emi Bo F C

6

# Triad/Close Voicings/ Cycle 3: C major

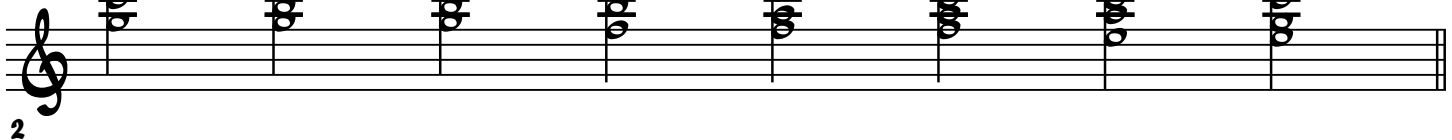
## Root Position

C Emi G Bo Dmi F Ami C



## Second Inversion

C Emi G Bo Dmi F Ami C



## First Inversion

C Emi G Bo Dmi F Ami C



# Triad/Spread Voicings/ Cycle 3: C major

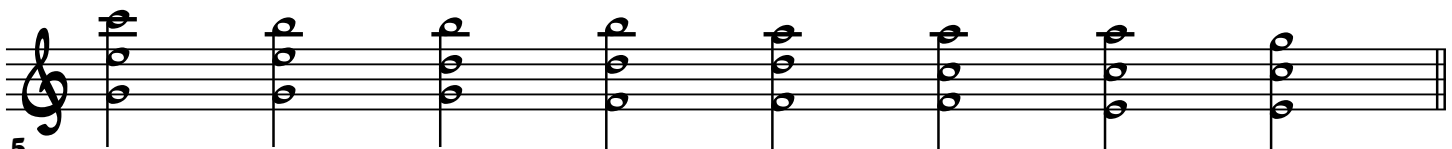
## Root Position

C Emi G Bo Dmi F Ami C



## Second Inversion

C Emi G Bo Dmi F Ami C



## First Inversion

C Emi G Bo Dmi F Ami C

